



# LIVE LEARN LEAD

MASTER'S PROGRAM IN  
BIOTECHNOLOGY

**Rajiv Gandhi Centre For Biotechnology (RGCB)**

Thycaud Post, Poojappura, Thiruvananthapuram 695 014, Kerala, India.

Ph: +91-471-2529400, 2347975, 2348753, Fax: +91 471 2348096

webmaster@rgcb.res.in, [www.rgcb.res.in](http://www.rgcb.res.in)



# BIOTECHNOLOGY, REDEFINING HEALTHCARE MANAGEMENT.

The current pandemic has proven beyond doubt that research and development in healthcare management is vital for our society. The world has woken up to the real value of scientific breakthroughs and accurate diagnosis.

By providing innovative Biotech curricula and infrastructure for fresh minds to find future cures for infectious diseases and epidemics, institutions like RGCB are going to be the need of the hour.





# LEARN

## BIOTECHNOLOGY THE WAY IT IS MEANT TO BE LEARNED.

Say goodbye to boring lectures. Get ready to learn from scientists and real life scenarios. At RGC B Thiruvananthapuram, we prepare you for the real world. The RGC B MSc program is affiliated to the Regional Centre for Biotechnology, an 'Institution of National Importance' created by the Department of Biotechnology, Government of India under the auspices of UNESCO.

“ ATTENDING THE  
INTERNATIONAL CANCER  
RESEARCH MEETING  
(IACR 2020) WAS A DREAM  
COME TRUE FOR ME,  
THANKS TO RGCB.  
I WAS INTRODUCED TO THE  
FASCINATING WORLD OF  
REAL RESEARCH DATA.  
I HOPE TO BE A SPEAKER  
AT SUCH SESSIONS. ”

**MANTHAN SHEKHAR  
BIJWE**

SECOND SEM STUDENT,  
RGCB MSc. BIOTECHNOLOGY



As one of India's leading names in biotech, RGCB brings you top industry professionals and ample global exposure. Our research programs are focused on Chronic Disease Biology and Pathogen Biology. This means you will be part of the state-of-the-art discovery and research programs in Cancer Research, Cardiovascular Disease & Diabetes Biology, Infection Biology, Neurobiology, Chemical & Environmental Biology, Reproductive Biology, Plant Disease Biology and Genetic Engineering.

From its beginning as an autonomous national institute in 2007, RGCB has now developed into an institution of world-class standards. Located in Thiruvananthapuram, the capital city of Kerala, RGCB is spread across three campuses. The main campus at Jagathy, Thiruvananthapuram, is where the bulk of our discovery research programs are implemented. The second at the KINFRA Park, Thiruvananthapuram, functions as the transit facility for the Bio-Innovation Center housing Bio-Imaging, Genomics and Laboratory Medicine & Molecular Diagnostic core facilities in addition to laboratories for Chemical Biology, Pathogen Biology, Cancer Research and Computational Biology. The third campus in Kalamaserry, Kochi is called Bio-Nest and provide state-of-the-art biotechnology instrumentation platforms to develop startup companies and commercialise innovative indigenous technologies.



**REAL  
RESEARCH  
ENVIRONMENT**

**ONE-ON-ONE  
SESSIONS**

**LEARN FROM  
SCIENTISTS**

**TOP-TIER  
LABORATORY  
FACILITIES**

**HANDS-ON  
LEARNING**

**ENTREPRENEURIAL  
OPPORTUNITIES**



# RGCB



## LIVE AND LEARN BIOTECHNOLOGY LIKE NEVER BEFORE

The Master's Program in Biotechnology at RGCB is focused on creating highly skilled students in the field. The program covers the fundamental fields of theories in Biotechnology, while focusing on laboratory exercises and industrial as well as research applications, so that you will be well-versed in the concepts of "Enterprise and Entrepreneurship." Here, you will be trained in a real business and technology development bio-incubator where startup companies function. We even offer stipends to our MSc students.

“ THE MORE I LEARN  
ABOUT BIOTECHNOLOGY,  
THE MORE I LOVE IT.  
I ASPIRE TO BE A PART OF  
A RESEARCH GROUP  
THAT DISCOVERS  
REVOLUTIONARY CURES  
AND TREATMENTS THAT  
WOULD HELP PEOPLE  
ALL OVER THE WORLD.  
ONCE I JOINED RGCB,  
I KNEW THAT I WAS IN  
THE RIGHT PLACE. ”

FATHIMA HISANA K F

SECOND SEM STUDENT,  
RGCB MSc. BIOTECHNOLOGY



WHAT  
CAN YOU  
SPECIALISE  
IN?

DISEASE BIOLOGY

Understand the molecular basis of biological systems  
and focus on applying this knowledge to improve  
human health.



“ HAILING FROM ASSAM,  
I WAS A LITTLE WORRIED  
ABOUT HOW I WOULD  
COPE IN A CITY LIKE  
THIRUVANANTHAPURAM.  
BUT I WAS IN FOR A REAL  
SURPRISE. THE PEOPLE  
HERE ARE SO FRIENDLY  
AND HELPFUL. I AM  
IN LOVE WITH THE PLACE  
SO MUCH, THAT I AM NOW  
LEARNING MALAYALAM. ”

**SREEPARNA NATH**

SECOND SEM STUDENT,  
RGCB MSc. BIOTECHNOLOGY



## GENETIC ENGINEERING

Master the fundamentals of molecular biology and learn about its applications in crop improvement, manufacture of biologicals and animal breeding.

## MOLECULAR DIAGNOSTICS AND DNA PROFILING

Master laboratory medicine, applied genomics and DNA technology for accurate diagnostic support and molecular forensics real fast.



“ FOR ME, THIS IS  
A REAL LEARNING  
EXPERIENCE.  
THERE ARE NO  
TEACHER-STUDENT  
BARRIERS. INSTEAD,  
WE ARE ALL LEARNING  
AND GROWING  
TOGETHER.  
WE REALLY FEEL  
SO MUCH AT  
HOME HERE. ”

**DEEPAK SAINI**

SECOND SEM STUDENT,  
RGC B MSc. BIOTECHNOLOGY



# WHO CAN SIGN UP?

If you have cleared the Graduate Aptitude Test-Biotechnology and have 60% aggregate marks (or an equivalent grade point average) in a UGC approved bachelor's degree in any branch of Science, Engineering or Medicine, BDS, Ayurveda, other traditional systems of medicine, BVSc, BPharm, BTech and BSc Agriculture.

Candidates who belong to SC, ST, OBC (non-creamy layer) and PWD categories will be given 5% relaxation of aggregate marks.

If you are in the final year of your qualifying degree program, you can also apply provided you produce a proof of having secured the required marks in your undergraduate degree program at the time of admission.



# A MODEL STATE FOR HEALTHCARE MANAGEMENT

## India's oldest couple to beat Covid-19 are home for Easter

Docs Kept Thomas (93) & Mariamma (88) Within Visible Range In ICU

Thiruvananthapuram: Thomas, 93, and Mariamma, 88, who were in intensive care for over a month, have been discharged from the ICU and are now at home. The couple, who were in the ICU for over a month, have been discharged from the ICU and are now at home. The couple, who were in the ICU for over a month, have been discharged from the ICU and are now at home.



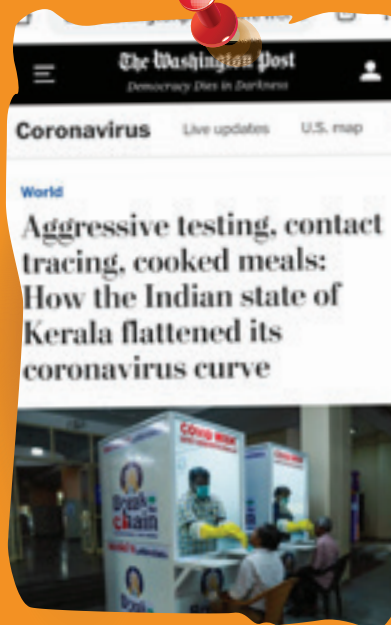
Kerala has proven itself to be an outlier in the battle against COVID-19. With lessons learned from the Nipah outbreak, heightened vigilance, controlled cross-border inflows and isolation, this state has managed to flatten the curve effectively and has caught the attention of the world.



## Kerala gets ICMR nod to explore plasma therapy

Blood From Cured Covid Patients To Treat The Sick

The ICMR has approved a protocol for experimental plasma therapy submitted by a team of doctors and scientists set up by Kerala government. The protocol involves using the plasma of recovered COVID-19 patients to treat the sick. The protocol involves using the plasma of recovered COVID-19 patients to treat the sick.



# FLATTENING THE CURVE, THE RGCB WAY.



With excellent state-of-the-art infrastructure and qualified personnel, Rajiv Gandhi Centre for Biotechnology (RGCB) proved to be a formidable ally for the government in its battle against COVID-19. RGCB not only set up a clear clinical and discovery research roadmap on COVID-19, but also initiated steps to develop cost-effective diagnostic test kits to support outbreak management and maximise benefits to the public.

## New strip to identify snake bite

DC CORRESPONDENT THIRUVANANTHAPURAM, NOV 22

A strip that identifies the type of poisonous snake from a drop of the victim's blood in less than two minutes of testing may soon be available, which will help doctors administer the toxin-specific antivenom and spare victims of side effects of the polyvalent antivenom. The breakthrough invention was made by scientists at Rajiv Gandhi Centre for Biotechnology (RGCB), which fabricated the device at an in-house production cost of less than ₹50 apiece.



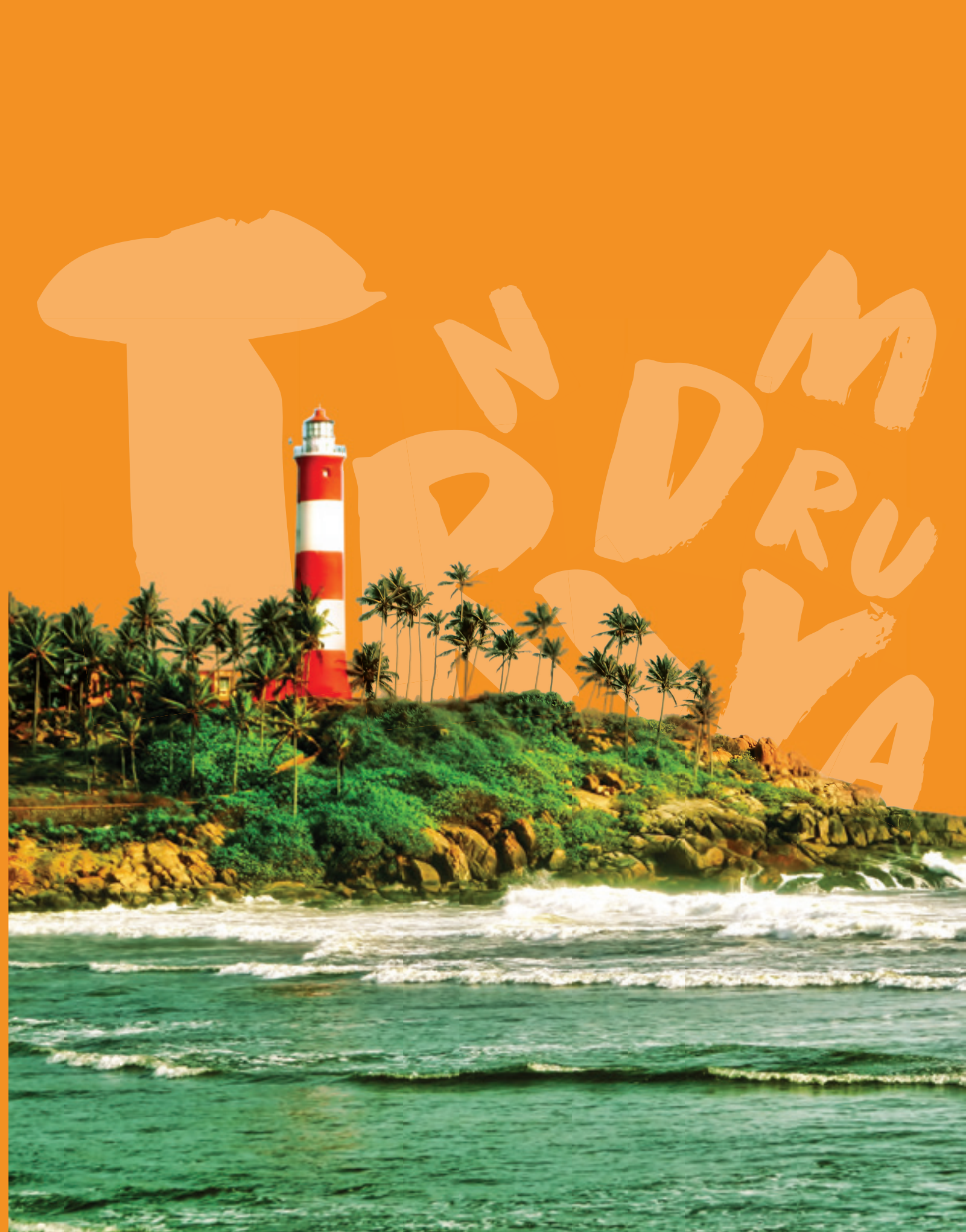


# RG

## GET READY TO FALL IN LOVE WITH THIRUVANANTHAPURAM

It's the capital city of Kerala with a strongly rooted heritage and a nostalgic colonial legacy. A swanky metropolis with quaint urban charm and plenty of scenic places to visit. Incredible museums, beautifully designed palaces, sacred temples and sugary beaches... you name it, Thiruvananthapuram has it all. Come on over and fall in love.

# LAB



**“ I CAME ACROSS RGCB AFTER SPENDING A LOT OF TIME ONLINE LOOKING AT DIFFERENT COURSES. WHAT STOOD OUT FOR ME WAS THEIR BELIEF IN REAL RESEARCH BASED TEACHING AND HANDS ON EXPERIENCE FOR STUDENTS. I’VE BEEN LEARNING SOMETHING NEW EVERY DAY SINCE I’VE JOINED RGCB AND I’M SO GLAD I MADE THIS CHOICE. ”**

**J IRENE INFANCY**

**SECOND SEM STUDENT,  
RGCB MSc. BIOTECHNOLOGY**



**READY TO  
LIVE,  
LEARN AND  
LEAD  
THE WAY IN  
BIOTECHNOLOGY?**

Get in touch with:  
Office of Academic Affairs  
Masters Program Division  
Rajiv Gandhi Centre for Biotechnology (RGCB)  
Thycaud P O, Thiruvananthapuram 695 014  
Kerala, India, Web: [www.rgcb.res.in](http://www.rgcb.res.in)  
Email: [msc@rgcb.res.in](mailto:msc@rgcb.res.in)  
Ph: +91 471 2529653, 2529655



# FEES and STIPENDS

## Fee details (In Rupees)

One time admission fee      3500

### Semester fees

	Semester 1	Semester 2	Semester 3	Semester 4
Tuition fees*	40000	40000	40000	40000
Medical Insurance	1000	1000	1000	1000
University application fees	5000	5000	5000	5000
Exam fees	1000	1000	1000	1000
Deposits (Refundable)	10000			

### Hostel fees\*\*

Room rent	10000	10000	10000	10000
Mess fees***(Veg)	25000	25000	25000	25000
Mess fees***(Non-veg)	35000	35000	35000	35000

\*SC/ST/PWD candidates will be exempted from payment of tuition fees as per Government of India rules.

\*Economically backward forward class ( EWS) will be entitled to fee concession as per Government of India rules.

\*\*Hostel fees will not be applicable to day scholars

\*\*\*Mess fees inclusive of standard breakfast, lunch, dinner as well as morning and evening tea. Extras not included.

## STIPENDS

All students selected for the MSc program will be awarded the RGCB-DBT Masters Stipend.

Intake for the current year: 45